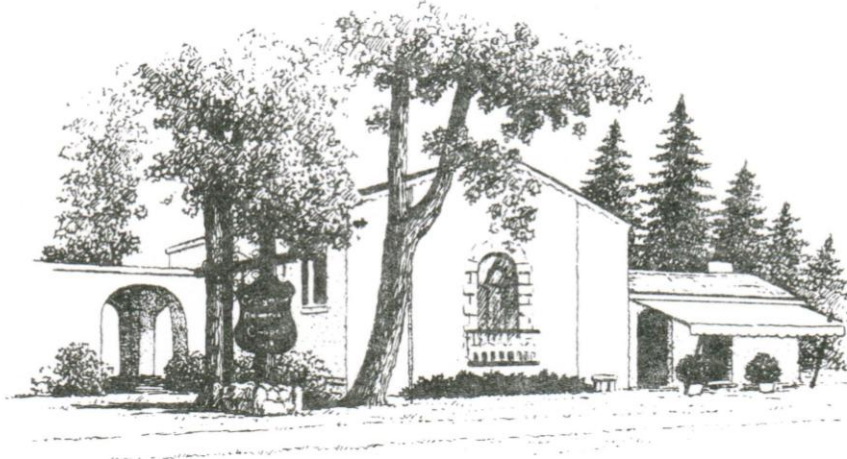


# GENERAL PRICE LIST

Effective – May 1, 2019

## *Creighton Memorial Chapel*



FD-497

**1588 LINCOLN STREET  
KINGSBURG, CALIFORNIA 93631  
Office (559) 897-2908  
Fax (559) 897-2909**

**[www.salseranddillard.com](http://www.salseranddillard.com)**

***“Proudly serving Kingsburg and the surrounding Communities for Generations”***

FOR MORE INFORMATION ON FUNERAL, CEMETERY, AND CREMATION MATTERS,  
CONTACT: DEPARTMENT OF CONSUMER AFFAIRS, CEMETERY AND FUNERAL  
BUREAU, 1625 NORTH MARKET BLVD., SUITE S-208, SACRAMENTO, CA 95834 ~  
(916) 574-7870

### **PRE-NEED AGREEMENT**

*“Prior to drafting any contract for goods or services, the responsible party or the decedent’s survivor who is handling the funeral arrangements is entitled to receive a copy of any preneed agreement in the possession of the funeral establishment that has been signed and paid for, in full or in part, by or on behalf of the decedent.”*

The goods and services shown below are those we can provide to our customers. You may choose only those items you desire. (However, any funeral arrangements you select will include a charge for our basic services and overhead). If legal or other requirements mean you must buy any items you did not specifically ask for, we will explain the reason in writing on the statement describing the funeral goods and services you requested.

### **PROFESSIONAL SERVICES**

- |    |  |         |
|----|--|---------|
| 1. | BASIC SERVICES OF FUNERAL DIRECTOR & STAFF   | *\$2170 |
|    | Our charge includes: Consultation with family or responsible party; 24 hour availability of staff and facilities to respond to initial requests for service; coordinating service plans with cemetery, and / or parties involved in the final disposition of the deceased; securing official documents and necessary registrations and sheltering of the deceased. In addition, this fee includes a proportionate share of our basic overhead costs. |         |
|    | This fee for our basic services and overhead will be added to the total cost of the funeral arrangements you select. (This fee is already included in our charges for direct cremations, immediate burials, and forwarding or receiving remains.)  |         |
| 2. | EMBALMING  | *\$525  |
|    | Except in certain special cases embalming is not required by law. Embalming may be necessary, however, if you select certain funeral arrangements, such as a funeral with viewing. If you do not want embalming, you usually have the right to choose an arrangement that does not require you to pay for it, such as a direct cremation or immediate burial.  |         |
| 3. | OTHER PREPARATION OF THE REMAINS   | *\$200  |
|    | Cosmetology, restorative art, sanitizing, dressing, casketing, and other specialized care or portions thereof.   |         |
| 4. | PREPARATION OF AUTOPSIED REMAINS   | \$200   |
| 5. | ADDITIONAL CHARGE FOR EVENING SERVICE, SATURDAY SUNDAY OR HOLIDAY  | \$150   |

### **FACILITIES**

- |    |  |        |
|----|--|--------|
| 1. | USE OF EQUIPMENT, FACILITIES AND STAFF FOR VIEWING OR VISITATION                 | *\$360 |
| 2. | USE OF EQUIPMENT, FACILITIES AND STAFF FOR FUNERAL CEREMONY                      | *\$635 |
| 3. | USE OF EQUIPMENT AND STAFF FOR FUNERAL CEREMONY AT OTHER FACILITY                | \$635  |
| 4. | USE OF FACILITIES, OR EQUIPMENT AT OTHER FACILITY AND STAFF FOR MEMORIAL SERVICE | \$635  |
| 5. | USE OF EQUIPMENT AND STAFF FOR GRAVESIDE SERVICE                                 | \$400  |
| 6. | USE OF EQUIPMENT FOR REFRIGERATION   | \$525  |

### **TRANSPORTATION**

- |    |  |             |
|----|--|-------------|
| 1. | TRANSFER OF REMAINS TO FUNERAL HOME (35 mile radius)               | *\$595      |
|    | (More than one person required - Additional)                       | \$100       |
| 2. | USE OF HEARSE FOR TRANSPORTATION TO PLACE OF DISPOSITION           | *\$295      |
| 3. | USE OF LIMOUSINE, -10 PASSENGER-FAMILY                             | \$325       |
| 4. | USE OF LIMOUSINE, -10 PASSENGER-PALLBEARERS                        | \$325       |
| 5. | UTILITY VEHICLE  | *\$100      |
| 6. | ONE DIRECTION ADDITIONAL MILEAGE FEE ABOVE INCLUDED 35 MILE RADIUS | \$2.75/MILE |
| 7. | TRANSPORT TO OR FROM LAX OR SAN JOSE AIRPORTS                      | \$550       |

## PROFESSIONAL SERVICE PLANS

### DIRECT CREMATION-----\$1,725 to \$2,720

Our charge for a direct cremation (without ceremony) includes the basic services of funeral director and staff, initial transfer of the deceased from place of death, (35 miles), refrigeration and disinfecting. Also includes crematory charges, California recording fee and minimum plastic urn. If you want to arrange for a direct cremation, you can use an alternative container. Alternative containers encase the body and can be made of materials like fiberboard or composition materials (with or without an outside covering). The minimum containers we provide are constructed of cardboard. Also included is the State Regulatory Fee.

- |  |         |
|--|---------|
| 1. Direct Cremation with container provided by purchaser           | \$1,725 |
| 2. Direct Cremation with minimum alternative container (cardboard) | \$1,800 |
| 3. Direct Cremation with minimum cloth-covered casket              | \$2,720 |
| 4. Direct Cremation with I.D. view ½ hour on Gurney with embalming | \$1,950 |

### IMMEDIATE BURIAL-----\$2,420 to \$36,795

Our charge for an immediate burial (without ceremony) includes the basic services of funeral director and staff, initial transfer of the deceased from place of death, (35 miles) transportation of the deceased to the cemetery and refrigeration.

- |   |                |
|---|----------------|
| 1. Immediate Burial with casket provided by purchaser | \$2,420        |
| 2. Immediate Burial with minimum cloth-covered casket | \$3,415        |
| 3. Immediate Burial with casket selected by purchaser | \$3,415-36,795 |

### FORWARDING OF REMAINS TO ANOTHER FUNERAL HOME-----\$2,520

This charge includes the basic services of funeral director and staff, initial transportation of the deceased from place of death (35 miles) to our funeral home and embalming, (airline or other shipping charges not included). Does not include merchandise, viewing or ceremony. This charge applies to shipment within the continental U.S. only.

### RECEIVING REMAINS FROM ANOTHER FUNERAL HOME-----\$1,825

This charge includes the basic services of funeral director and staff, transfer of remains to funeral home, (35 miles), care of the deceased and local transportation of the deceased to cemetery. Does not include merchandise, viewing, ceremony, or graveside service.

**MERCHANDISE SELECTED**

REGISTER BOOK	\$20-\$95
MEMORIAL FOLDERS (per 100)	\$44-\$175
ACKNOWLEDGEMENT CARDS (box of 50)	\$12-\$20
PRAYER CARDS (per 100)	\$50
KEEPSAKE BOOKMARKS (per 4)	\$20
HARDBACK KEEPSAKE PHOTO BOOK	\$50
SOFT COVERED PHOTO BOOK	\$30
8x10 CANVAS PORTRAIT	\$195
11x14 CANVAS PORTRAIT	\$225
16x20 CANVAS PORTRAIT	\$240
MEMORIAL TRIBUTE VIDEO	\$125
CRUCIFIX	\$20
ROSARY BEADS	\$12
MEMORIAL TRIBUTE BLANKET	\$125
BURIAL CLOTHING	\$125-\$215
BODY BAG (Used as necessary)	\$100
AIR TRAY FOR SHIPPING	\$150
COMBO PACK FOR SHIPPING REMAINS WITHOUT CASKET	\$250
CASKETS (price range)	\$165-\$35,000
ALTERNATIVE CONTAINERS (used in cremation)-Cardboard	\$75
INFANT & CHILD CASKETS	\$165-\$450
RENTAL CASKET (Used for Cremation) includes insert	\$895

A complete price list will be provided at the funeral home

**OTHER SERVICES**

CALIFORNIA RECORDING FEE	*\$12
CERTIFIED COPIES OF DEATH CERTIFICATE (each)	\$21
COUNTY CROSS FILING FEE	\$3
CLERGY DONATION	(Suggested Donation) \$75-\$250
ORGANIST FEE	\$75-\$150
SINGER FEE	75-\$150
TRUMPET PLAYERS (“Taps” player for veteran’s services)	\$30-\$85
PACKAGING AND SHIPPING OF CREMATED REMAINS	\$150
SCATTERING OF REMAINS AT SEA	\$250-350
WEBCASTING SERVICE (Only available to Services held in out Chapel)	\$200
WITNESS CREMATION	\$150

**CREMATORY CHARGES**

ADULT	\$835
CHILD ( <i>Three - Twelve</i> Years)	\$150
CHILD (Infant - <i>Three</i> Years)	\$100
CREMATORY REGULATORY FEE	\$8.50

**PAYMENT:** It is customary for funeral expenses to be paid in full at the time of the arrangement or before the day of any funeral services. As dedicated professionals, we are committed to serving your family. Should you have difficulty meeting the financial obligations, please discuss your situation, in confidence, with your funeral director. **Insurance:** Accepted from companies that will accept an assignment to Creighton Memorial Chapel

CREIGHTON MEMORIAL CHAPEL  
1588 LINCOLN STREET  
PHONE: (559) 897-2908 FAX: (559) 897-2909  
FD-497

OUR EXPERIENCE SHOWS THAT MOST FAMILIES SELECT ONE OF THE FOLLOWING PACKAGE SERVICES: DISCOUNTED PACKAGE PRICES ARE HONORED FOR MERCHANDISE AND CASKET PURCHASES FROM CREIGHTON MEMORIAL CHAPEL

**\*A. TRADITIONAL FUNERAL:**

TRADITIONAL FUNERAL SERVICE CONDUCTED AT CHAPEL OR CHURCH  
THIS PACKAGE INCLUDES THE SERVICES OF THE FUNERAL DIRECTOR ADMINISTRATIVE STAFF, PROFESSIONAL STAFF FOR COORDINATING AND DIRECTING THE SERVICES, OBTAINING LEGAL DOCUMENTS, AND OTHER PAPER WORK NECESSARY TO COMPLETE THE ARRANGEMENTS, REMOVAL OF THE DECEASED FROM THE PLACE OF DEATH TO THE MORTUARY (WITHIN 35 MILE RADIUS), EMBALMING AND/OR SANITARY CARE OF THE REMAINS, DRESSING, CASKETING, COSMETIZING, HAIR CARE, USE OF THE FACILITIES FOR VIEWING, USE OF FACILITY AND STAFF FOR EVENING SERVICE IF DESIRED, USE OF THE FACILITIES FOR SERVICE OR SET UP AT CHURCH OR OTHER FACILITY, WEBCASTING OF SERVICE UPON REQUEST (Only available on Services held in our Chapel), AUTO EQUIPMENT (FUNERAL COACH, UTILITY VEHICLE), CALIFORNIA RECORDING FEE.

TOTAL ITEMIZED PACKAGE PRICE \$5242.00

***TOTAL DISCOUNT PACKAGE PRICE \$4025.00***

**B. GRAVESIDE SERVICE:**

THIS PACKAGE INCLUDES THE SERVICES OF THE FUNERAL DIRECTOR, ADMINISTRATIVE STAFF, PROFESSIONAL STAFF FOR COORDINATING AND DIRECTING THE SERVICE, REMOVAL OF THE DECEASED FROM THE PLACE OF DEATH TO THE MORTUARY (WITHIN 35 MILE RADIUS), EMBALMING AND/OR SANITARY CARE OF THE REMAINS, OTHER PREPARATION OF THE REMAINS, DRESSING, CASKETING, COSMETIZING, HAIR CARE, USE OF THE FACILITIES FOR VIEWING, USE OF FACILITY AND STAFF FOR EVENING SERVICE IF DESIRED, AUTO EQUIPMENT (FUNERAL COACH, UTILITY VEHICLE), CALIFORNIA RECORDING FEE.

TOTAL ITEMIZED PACKAGE PRICE \$5,042.00

***TOTAL DISCOUNT PACKAGE PRICE \$3600.00***

**C. SERVICE CONCLUDING AT CHAPEL:**

THIS PACKAGE INCLUDES THE SERVICES OF THE FUNERAL DIRECTOR, ADMINISTRATIVE STAFF, PROFESSIONAL STAFF FOR COORDINATING AND DIRECTING THE SERVICE, REMOVAL OF THE DECEASED FROM THE PLACE OF DEATH TO THE MORTUARY (WITHIN 35 MILE RADIUS), EMBALMING AND/OR SANITARY CARE OF THE REMAINS, OTHER PREPARATION OF THE REMAINS, DRESSING, CASKETING, COSMETIZING, HAIR CARE, USE OF THE FACILITIES FOR VIEWING, USE OF FACILITY AND STAFF FOR EVENING SERVICE IF DESIRED, USE OF THE CHAPEL FOR SERVICE, WEBCASTING OF SERVICE UPON REQUEST (Only available on Services held in our Chapel), UTILITY VEHICLE, CALIFORNIA RECORDING FEE.

TOTAL ITEMIZED PACKAGE PRICE \$4935.00

***TOTAL DISCOUNT PACKAGE PRICE \$3770.00***

**D. MEMORIAL SERVICES:**

THIS PACKAGE INCLUDES THE SERVICES OF THE FUNERAL DIRECTOR, ADMINISTRATIVE STAFF, PROFESSIONAL STAFF FOR COORDINATING AND DIRECTING THE SERVICE, OBTAINING LEGAL DOCUMENTS AND OTHER PAPER WORK NECESSARY TO COMPLETE THE ARRANGEMENTS, REMOVAL OF THE DECEASED FROM THE PLACE OF DEATH TO THE MORTUARY (WITHIN 35 MILE RADIUS), SANITARY CARE OF THE REMAINS, USE OF REFRIGERATION, USE OF THE FACILITIES FOR FUNERAL SERVICE/CEREMONY OR FOR SERVICE SET-UP AT AN OUTSIDE CHURCH OR OTHER FACILITY, WEBCASTING OF SERVICE UPON REQUEST (Only available on Services held in our Chapel), CALIFORNIA RECORDING FEE AND CREMATORY REGULATORY FEE. ALSO INCLUDED IS THE CREMATORY CHARGES FOR CREMATION, INCLUDING BASIC CREMATION CONTAINER AND BASIC URN. THIS SERVICE DOES NOT INCLUDE EMBALMING, OTHER PREPARATION OF THE REMAINS OR THE USE OF FACILITIES FOR VIEWING.

TOTAL ITEMIZED PACKAGE PRICE \$5243.50

*TOTAL DISCOUNT PACKAGE PRICE \$2817.00*

**E. SERVICE OF REMEMBRANCE WITH RENTAL CASKET:**

THIS PACKAGE INCLUDES THE SERVICES OF THE FUNERAL DIRECTOR, ADMINISTRATIVE STAFF, PROFESSIONAL STAFF FOR COORDINATING AND DIRECTING THE SERVICE, OBTAINING LEGAL DOCUMENTS AND OTHER PAPER WORK NECESSARY TO COMPLETE THE ARRANGEMENTS, REMOVAL OF THE DECEASED FROM THE PLACE OF DEATH TO THE MORTUARY (WITHIN 35 MILE RADIUS), EMBALMING AND/OR SANITARY CARE OF THE REMAINS, DRESSING, CASKETING, COSMETIZING, HAIR CARE, USE OF THE FACILITIES FOR VIEWING, USE OF FACILITY AND STAFF FOR EVENING SERVICE IF DESIRED, USE OF OUR FACILITIES FOR SERVICE, WEBCASTING OF SERVICE UPON REQUEST (Only available on Services held in our Chapel). ALSO INCLUDES USE OF THE RENTAL CASKET INCLUDING RENTAL CASKET INSERT USED FOR THE CREMATION, MINIMAL URN, CREMATORY CHARGES, UTILITY VEHICLE, AND CALIFORNIA RECORDING FEE AND CREMATORY REGULATORY FEE.

TOTAL ITEMIZED PACKAGE PRICE \$6968.50

*TOTAL DISCOUNT PACKAGE PRICE \$5062.00*

WITHOUT RENTAL CASKET—TOTAL ITEMIZED PACKAGE PRICE \$6073.50

*TOTAL DISCOUNT PACKAGE PRICE \$4162.00*

**\*\*\*ALL PACKAGED FUNERAL AND CREMATION SERVICES ARE AT A PACKAGE PRICE. THEREFORE, NO SUBSTITUTIONS ON ITEMS THAT ARE LISTED MAY BE MADE. PACKAGE PRICES ARE LIMITED TO FAMILIES WHO PURCHASE MERCHANDISE SUCH AS CASKETS AND URNS FROM CREIGHTON MEMORIAL CHAPEL\*\*\***

**PACKAGED MEMORIAL OPTIONS**

**1. DISTINCTLY YOURS**

THIS HIGHLY CUSTOMIZABLE MEMORIAL PACKAGE INCLUDES REGISTER BOOK, TRI-FOLD MEMORIAL FOLDERS (100), ACKNOWLEDGEMENT CARDS (50), KEEPSAKE BOOKMARKS (4), 11x14 FRAMED CANVAS PHOTO, HARDCOVER KEEPSAKE PHOTO BOOK AND IN APPRECIATION CREIGHTON MEMORIAL WILL INCLUDE A MEMORIAL TRIBUTE DVD (30 PHOTOS 2 SONGS) WHICH CAN BE USED FOR YOUR SERVICE.

TOTAL ITEMIZED PACKAGE PRICE \$730

***TOTAL DISCOUNT PACKAGE PRICE    \$495.00***

**2. SIMPLY TREASURED**

THIS HIGHLY CUSTOMIZABLE MEMORIAL PACKAGE INCLUDES REGISTER BOOK, STANDARD SIZE MEMORIAL FOLDERS (100), ACKNOWLEDGEMENT CARDS (50), KEEPSAKE BOOKMARKS (4), PAPERBACK KEEPSAKE PHOTO BOOK AND IN APPRECIATION CREIGHTON MEMORIAL WILL INCLUDE A MEMORIAL TRIBUTE DVD (30 PHOTOS 2 SONGS) WHICH CAN BE USED FOR YOUR SERVICE.

TOTAL ITEMIZED PACKAGE PRICE \$405

***TOTAL DISCOUNT PACKAGE PRICE    \$295.00***

WITH TRI-FOLD MEMORIAL FOLDERS TOTAL ITEMIZED PACKAGE PRICE \$455

***TOTAL DISCOUNT PACKAGE PRICE    \$345.00***

**3. CREIGHTON MEMORIAL STANDARD**

THIS PACKAGE INCLUDES REGISTER BOOK, STANDARD MEMORIAL FOLDERS (100), ACKNOWLEDGEMENT CARDS (50), KEEPSAKE BOOKMARKS (4) AND IN APPRECIATION CREIGHTON MEMORIAL WILL INCLUDE A MEMORIAL TRIBUTE DVD (30 PHOTOS 2 SONGS) WHICH CAN BE USED FOR YOUR SERVICE.

TOTAL ITEMIZED PACKAGE PRICE \$221

***TOTAL DISCOUNT PACKAGE PRICE    NO CHARGE\****

***\*THE CREIGHTON MEMORIAL STANDARD MEMORIAL SET IS ONLY INCLUDED AT "NO CHARGE" WHEN SELECTED IN CONJUNCTION WITH ONE OF THE SERVICES PACKAGES A-E FROM THE GENERAL PRICE LIST.***